



## Next Generation Landscape Lights

Beautify your home with GTL Landscape's elegant and energy efficient luminaires. Savvy homeowners long ago replaced their incandescent- and halogen-based landscape lighting with energy efficient LED's. Now GTL introduces full-color and individually programmable illumination for your gardens, walkways, and walls. Make your home stand out from the pack in brilliant and dazzling white—or bathe it in warm and welcoming amber for your next dinner party. Turn your yard into a colorful holiday wonderland by simply touching your smartphone. GTL Landscape's fixtures include a control system originally developed for Broadway productions. Built to our exacting standards for long life and color accuracy, each model undergoes rigorous testing prior to installation. Our engineers provide mounts and color animations to enhance the quality of your unique installation, including special sequences to celebrate patriotic and religious holidays.

Our computer lighting controllers orchestrate the color and intensity of hundreds of lights with millisecond accuracy—and also integrate with landscape lighting, wall washes, and path lights to provide a cohesive outdoor experience for your tenants and guests. An internal calendar triggers lighting scenes based on date and time—automatically running special programs on holidays—while keeping track of sunrise and sunset for additional energy savings.

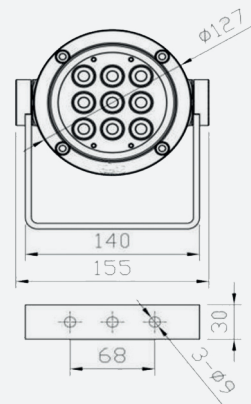
Sealed power supplies and actively cooled, weatherproof enclosures protect your investment from the extremes of the Gulf climate. We never play "hide the ball" with software in an attempt to lock clients into a relationship. Though we're supremely confident in our start-up and programming services, we provide you with the piece-of-mind of a full suite of programming software and easy-to-use iPhone and Android applications.

As a local Houston business, we cherish our public spaces and enjoy them with our families. Therefore we monitor our installations as a matter of both good business and personal pride, supplying unmatched maintenance and after-installation care. Your landscaping represents a significant investment and source of beauty for your family and community. Make sure it is seen in the best light.

### Light



### Dimensions



### Spike Mount



#### ADDRESS

📍 9826 Clay Rd,  
Houston, TX 77080

#### CALL US

☎ 281.741.3116

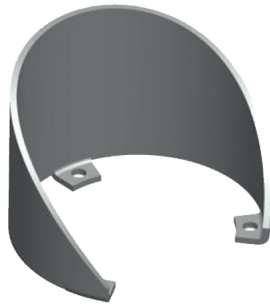
#### EMAIL US

✉ info@gtllights.com



## ACCESSORIES

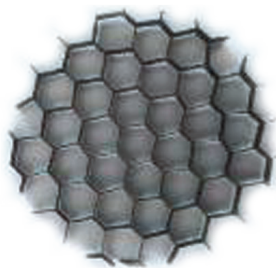
### Shield



### Snoot:



### Honeycomb:



## Specifications:

- ✓ **Body construction:**  
ADC12 Aluminum Alloy
- ✓ **Lens:**  
12mm tempered glass
- ✓ **Power:**  
6W-18W
- ✓ **Voltage:**  
24V DC
- ✓ **Color:**  
RGB, RGBW
- ✓ **Control:**  
DMX512
- ✓ **Ingress Protection:**  
IP 65: Protection against low-pressure jets of directed water from any angle
- ✓ **Beam Angle:**  
45° (5°/15°/60°/90° available)
- ✓ **Operating temperature range:**  
-13°F to 122°F (-25°C to 50°C)
- ✓ **LED life:**  
>50,000 hours
- ✓ **Mount:**  
Spike, wall & floor

### ADDRESS

📍 9826 Clay Rd,  
Houston, TX 77080

### CALL US

☎ 281.741.3116

### EMAIL US

✉ [info@gtllights.com](mailto:info@gtllights.com)